

A. Teak Grey
PP #1008



B. White
Plu #2101

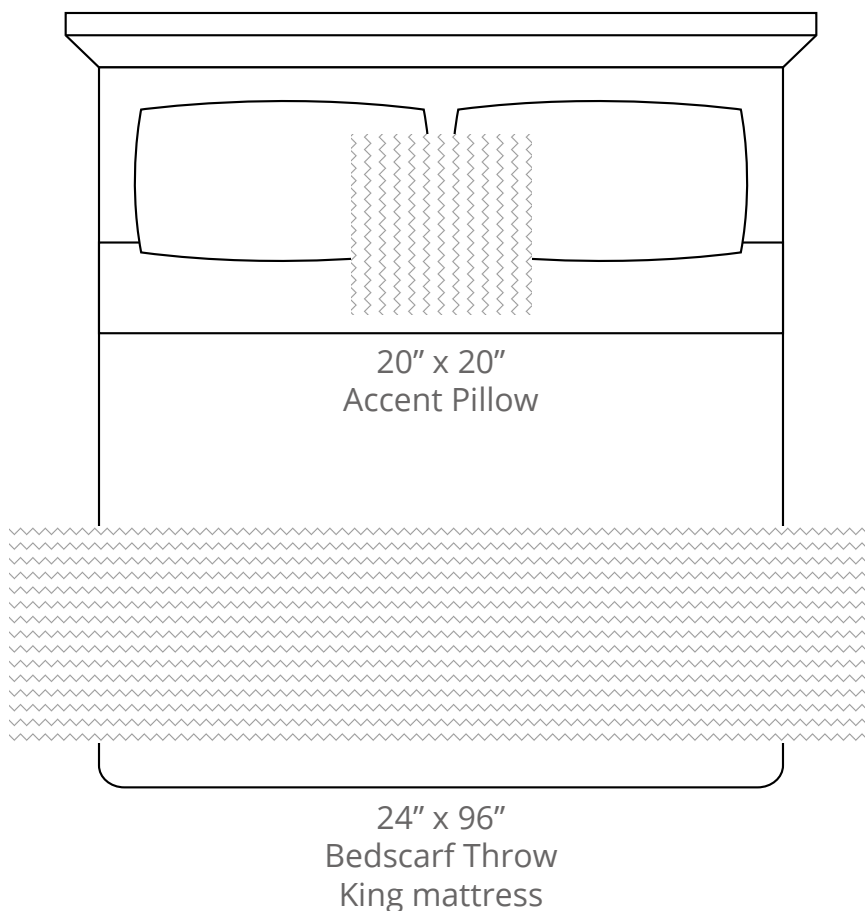
CONTENT
Polypropylene/
Polyplush

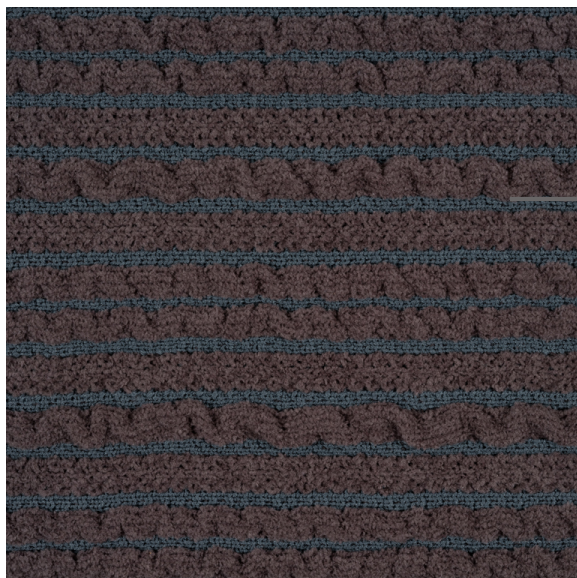
PATTERN REPEAT
1.625" Ver. x 1.375" Hor.

DESIGN TYPE
Stitch/Chevron

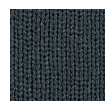
Products are made to the order
and can be customized within
the limitations of the knit
construction

*Start/Finish edges must
be Polypropylene excluding
Brite yarns





A. Shadow
Plu #2133



B. Battleship
PP #1009

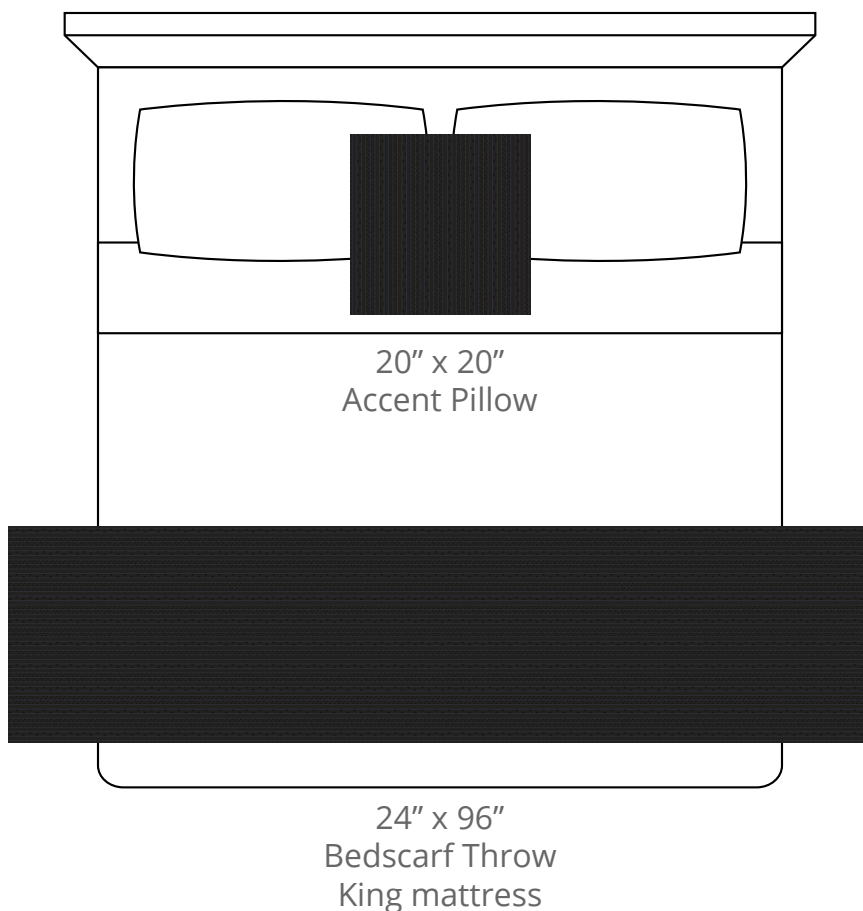
CONTENT
Polypropylene/
Polyplush

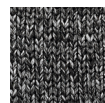
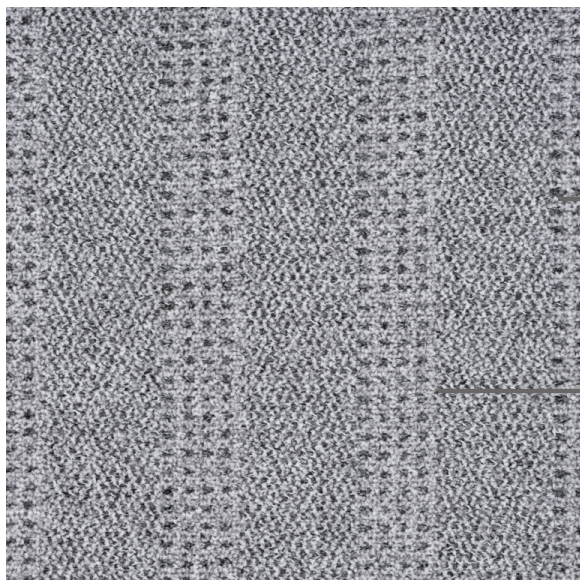
PATTERN REPEAT
2.5" Ver. x 1.5" Hor.

DESIGN TYPE
Stitch/Stripes

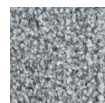
Products are made to the order
and can be customized within
the limitations of the knit
construction

*Start/Finish edges must
be Polypropylene excluding
Brite yarns





A. Charcoal Melange
PP #1029



B. Charcoal Heather
Plu #2149

CONTENT
Polypropylene/
Polyplush

PATTERN REPEAT
0.125" Ver. x 2" Hor.

DESIGN TYPE
Stitch/Stripes

Products are made to the order
and can be customized within
the limitations of the knit
construction

*Start/Finish edges must
be Polypropylene excluding
Brite yarns

